

Community needs driven qualitative research: Evidence based practice from within

AQM 2013, June 21 - 23, 2013

Liliana Alvarez, ICCER- UofA
Sandra Woodhead-Lyons, ICCER



INSTITUTE FOR CONTINUING CARE EDUCATION & RESEARCH

OUTLINE

- ICCER
- Community Needs driven Research Network
- Why?
- What?
- How?
- Results: Participants
- Results: Themes
- Results: Pilot Pojects
- Results: The CNRN

INSTITUTE FOR CONTINUING CARE EDUCATION AND RESEARCH (ICCER)

Collaborative endeavour post-secondary institutions and continuing care providers.



To improve continuing care for Albertans by working with academics, researchers, providers, and students.

COMMUNITY NEEDS DRIVEN RESEARCH NETWORK (CNDRN)

- Funded by AIHS (January 2012):
 1. Determine, from the perspective of the front-line workers, what are the research needs in CC in order to make a difference to practice and to the care of people within the CC system
 2. Share and develop these research needs.

WHY?

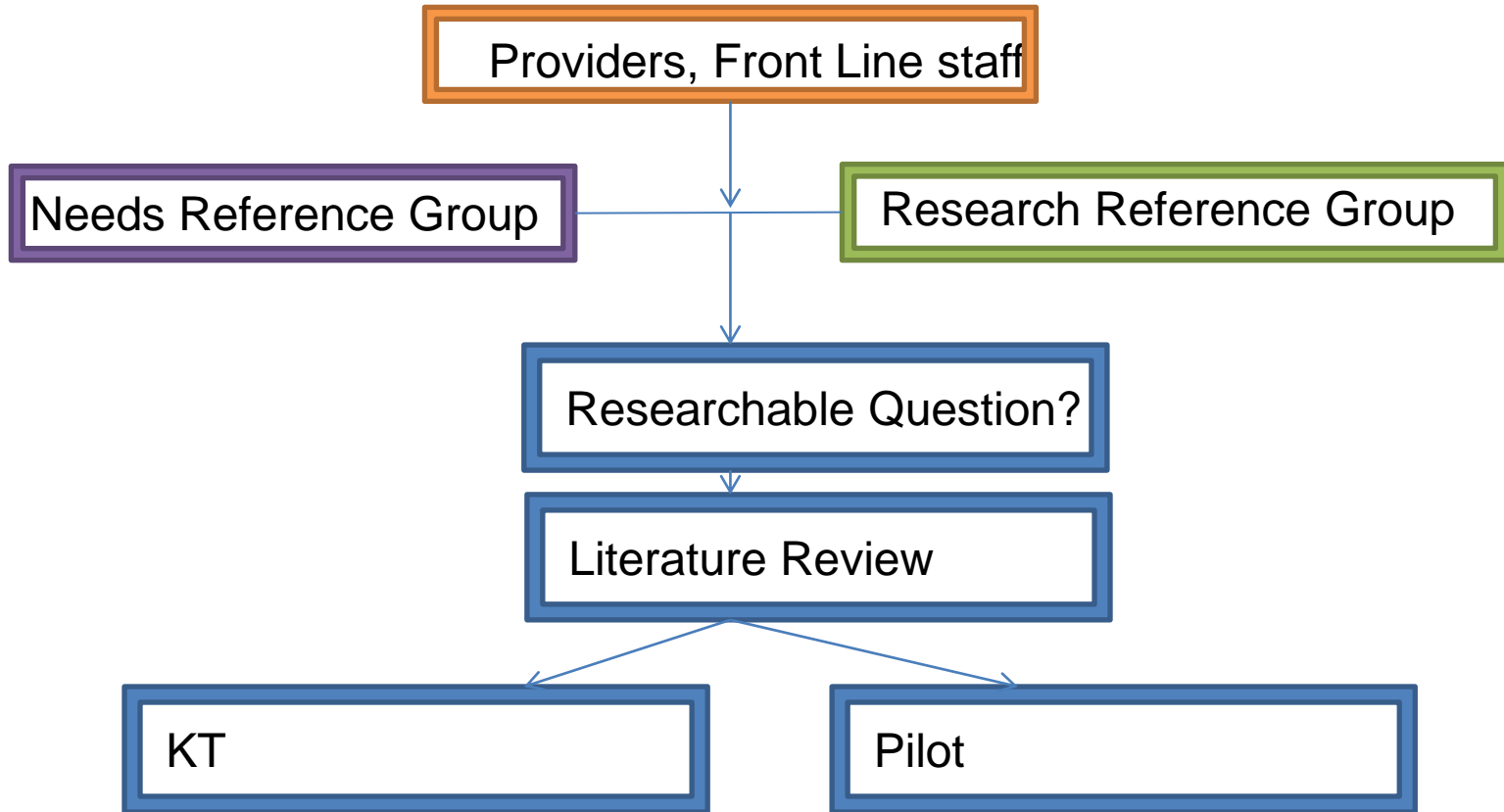
- CC sector is under-researched
- Academically driven
- Front-line staff are sources of data
- Knowledge translation potential is lost



WHAT?

- A model needs driven research process for continuing care:
 - Identify concerns, issues, gaps from the providers of care.
 - Literature reviews for existing evidence and possible gaps.
 - Broker the establishment of interdisciplinary teams to address gaps.
 - Fund and promote two pilot research projects

How?



DATA ANALYSIS

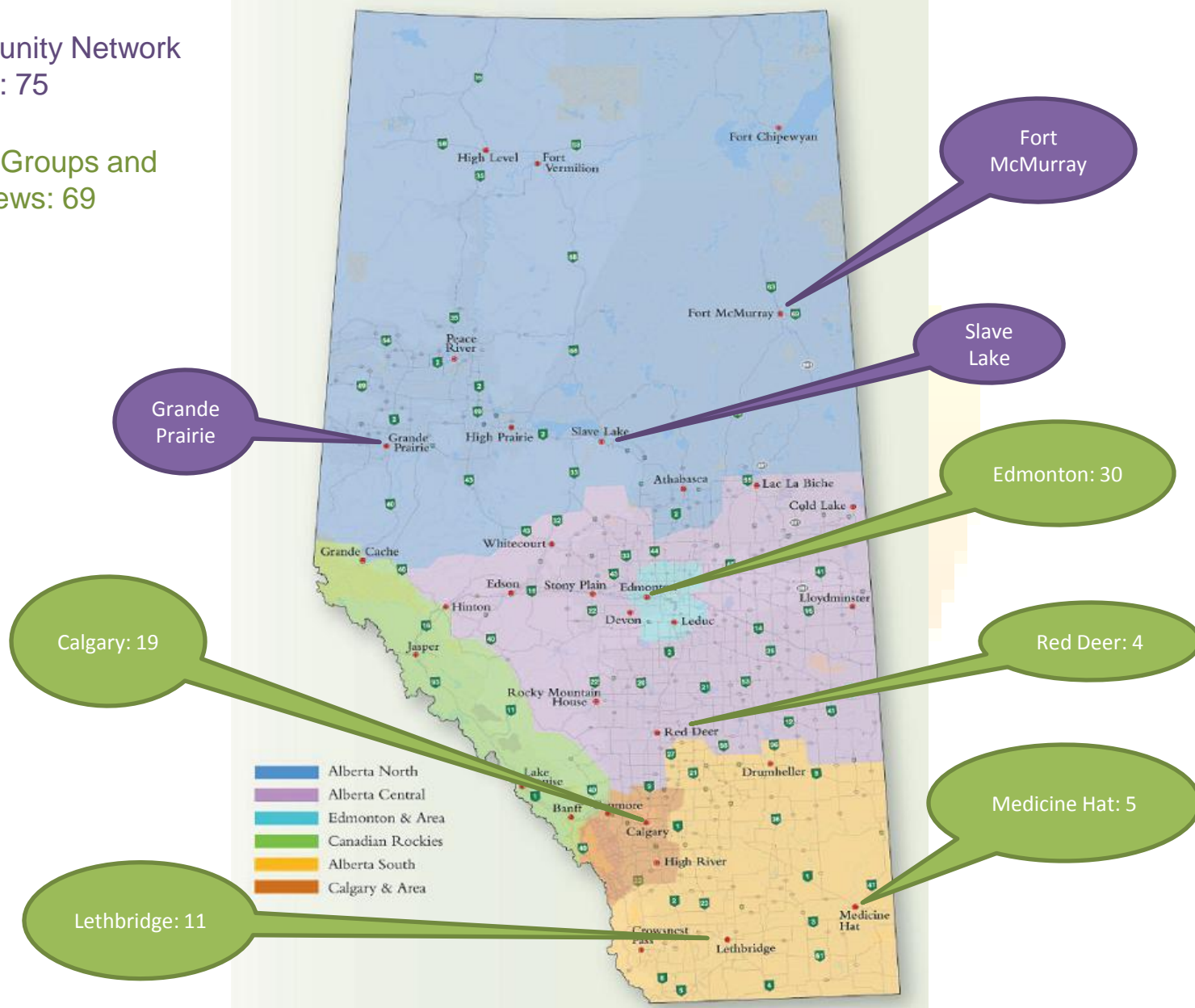
- QSR NVivo 10[®]
- Manifest content analysis
- Latent content analysis



RESULTS: PARTICIPANTS

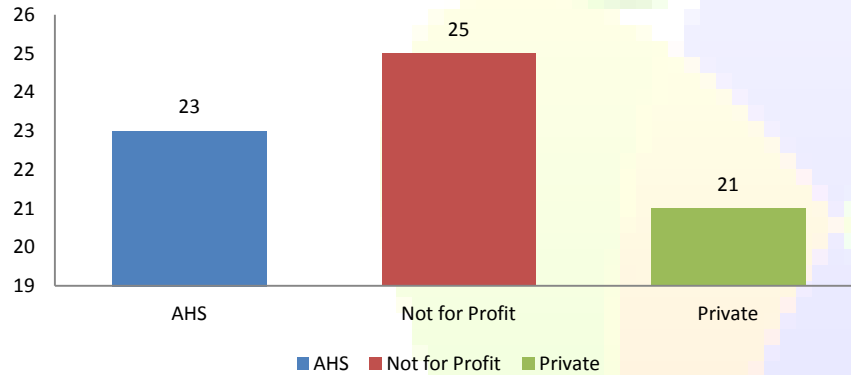
Community Network events: 75

Focus Groups and Interviews: 69



RESULTS: PARTICIPANTS

Participant Provider Organizations



Participants' Roles	
Role	Count of Overall Role
Administrator/Manager/Director of care	22
Professional practice leads	12
Education (Examples learning consultant)	7
HCA	7
Nursing staff (NP/RN/LPN/)	6
Non- direct care staff (housekeeping/dining room)	6
Rehabilitation Staff	4
Recreation Staff	3
Physician	2
Grand Total	69

RESULTS: THEMES

Theme	Sub- Themes
Mental Health related issues	<ul style="list-style-type: none">- Challenging behaviors- Care for non- dementia clients- Client Mix
Education related issues	<ul style="list-style-type: none">- Adult Learning- Effectiveness and outcomes- HCA Training
System navigation and transition of care	<ul style="list-style-type: none">- Information and Education- Assessment- Impact on clients and families
Technology for adult learning and point of care	
Role definition within the CC sector	

RESULTS: THEMES

Working with families

- Family's role
- Families as CC clients
- The overlooked value of family's knowledge

Staff retention and recruitment

- Recruitment
- Retention

Caregiving

- Attitudes and attributes of caregivers
- Caregiving and couples in the CC sector
- Impact of habits and addictions

Intercultural issues

- Clients' cultural backgrounds
- Staff's cultural backgrounds

Need for Recreation and Rehabilitation staff

RESULTS: LOCATION-DEPENDENT THEMES

Theme	Province Area
Palliative Care, end of life and hospice	Edmonton
RAI Research	Calgary and Edmonton
AHS Policy Inconsistencies	Southern Alberta
First Nations issues	Northern Alberta

RESULTS: PILOT PROJECTS

- As part of the CRDN, ICCER is funding 2 research teams to work on 2 of the top issues identified.
- These projects will provide some insight and potential strategies into issues identified by front-line workers as important.

RESULTS: PILOT PROJECTS

1. Challenging/responsive behaviours

- November 2012 – Challenging behaviours symposium: over 80 people attended across Alberta (and Manitoba, Ontario).
- Funding for team led by Dr. Suzette Brémault-Phillips: development of a network to support front-line workers
(Behavioural Supports Alberta www.bsa.ualberta.ca)

RESULTS: PILOT PROJECTS

2. Adult learning - Learning Circles as an innovative means of transferring knowledge.
- Funding a project at Excel Society and Bethany Care Society to evaluate the effectiveness of learning circles as a means of KT.

PERCEPTIONS: COMMUNITY NEEDS DRIVEN PROCESS

“Can I ask you a question? Is there going to be some research on the difference the outcome will make in the end because you did consult, vs. the research driven derived project? Because this is more expensive way to do things probably to start with when you have a certain period of time to do this community consultation sort of piece but it’s so relevant to us, so good, it will be good to see if there’s a difference.”

“Yeah, we want to engage the researcher, engage with him. ‘Cause he wants—I mean, he wants access to our data, we want his knowledge, and I mean, we can only learn from each other, so we need to collaborate, we want to.”

“And I think for research in all long-term care across the province, we have to all do something differently in terms of knowledge translation and knowledge application. So... collaboration, being consulted, I just think that’s a ... I think it’s a critical point; I think it’s going to be phenomenal!”

NEXT STEPS

- Disseminate our findings:
 - www.iccer.ca
 - twitter (@ICCER_AB)
 - facebook (<http://tinyurl.com/oq7cz36>), and
 - LinkedIn (<http://tinyurl.com/p9eabah—Group>) or (<http://tinyurl.com/oo6kjmd—Company page>)
- Encouraging researchers to do research into these high priority issues

ICCER

Sandra Woodhead Lyons

Executive Director

(780) 248-1504

sandra@iccer.ca

www.iccer.ca