

INSTITUTE FOR CONTINUING CARE EDUCATION AND RESEARCH - PROVIDER PERSPECTIVES ON THE COMMUNITY NEEDS DRIVEN RESEARCH NETWORK

AAG, 23 October, 2013
Sandra Woodhead Lyons, ICCER
Iris Neumann, CapitalCare
Sharon Read, Excel Society



INSTITUTE FOR CONTINUING CARE EDUCATION & RESEARCH



ACKNOWLEDGEMENT

- We would like to thank Alberta Innovates Health Solutions for funding the CNDRN.

OUTLINE

- Institute for Continuing Care Education and Research
- Community Needs Driven Research Network - Why? What? How?
- Results - Participants, Themes, Pilot Projects
- Lessons Learned and Next Steps
- Provider Perspective

INSTITUTE FOR CONTINUING CARE EDUCATION AND RESEARCH (ICCER)

Collaborative endeavour of post-secondary institutions and continuing care providers.



To improve continuing care for Albertans by working with academics, researchers, educators, providers, and students.

ICCER – HISTORY AND BACKGROUND

- Founded by CapitalCare, NorQuest College, University of Alberta, and AHS in October 2008.
- Membership has varied over time. Currently 8 member organizations with another 3 set to join by December. Other organizations in the new fiscal year.

ICCER ACTIVITIES

- Community Networking Events
 - Grande Prairie
 - Slave Lake
 - Regional Municipality of Wood Buffalo
- Interdisciplinary 410 Continuing Care Stream
- Optimizing Workforce Utilization to Inform Care Delivery in Continuing Care Facilities
- Challenging Behaviours Symposium

Benefits Offered by ICCER

- **Influence** health provider education
(e.g., student practicums with member agencies, interdisciplinary course content)
- **Capitalize** on campus Alberta linkages
(e.g., Uof A, Bow Valley College, Keyano College, Norquest College)
- **Connect** with provider organizations in end-of-grant Knowledge Transfer
- **Engage** in community provider partnerships
- **Research** *provider identified* needs

CNDRN - WHY?

- CC sector is under-researched
- Academically driven
- Front-line staff are sources of data
- Knowledge translation potential is lost



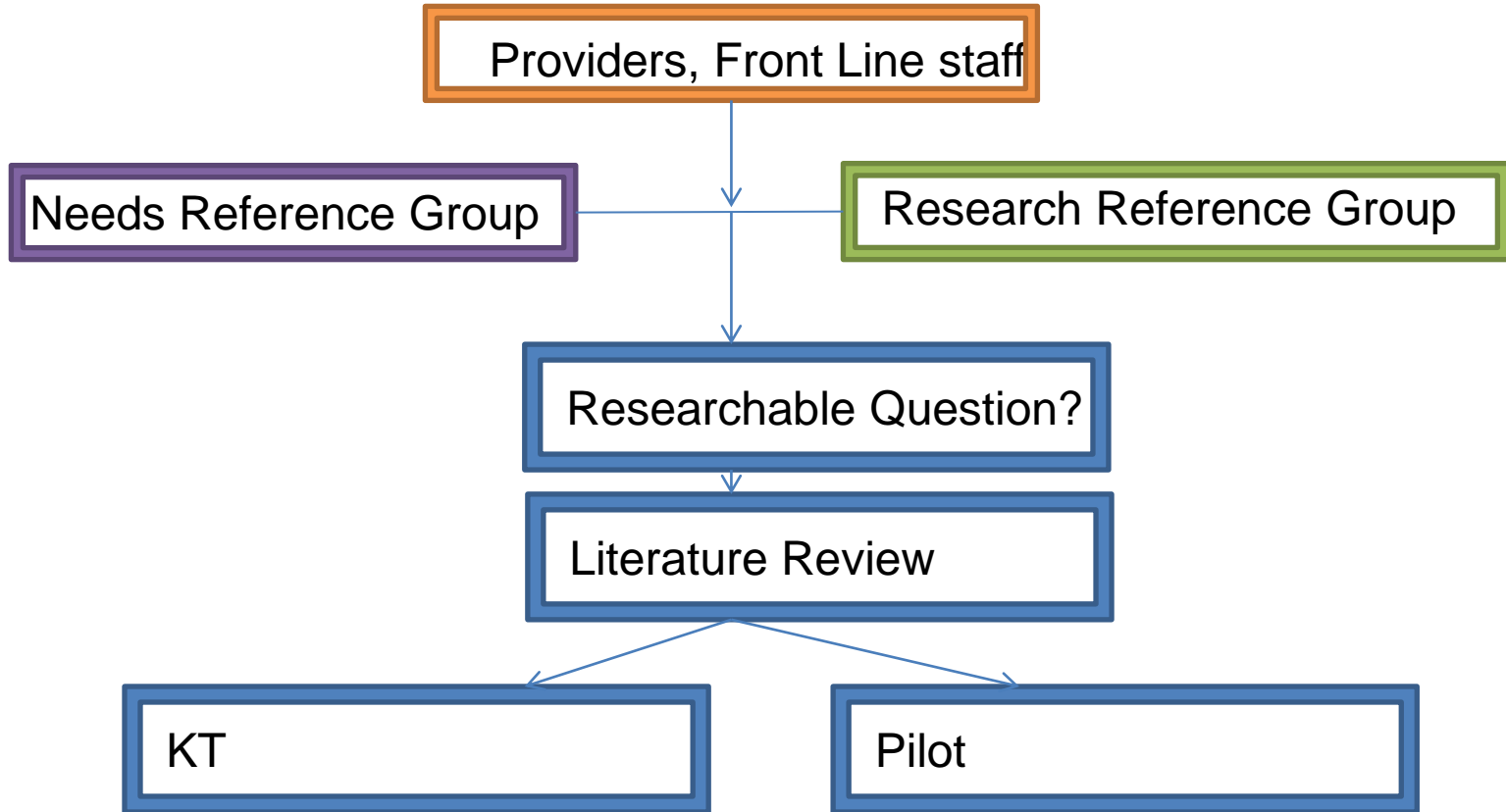
CNDRN – WHAT?



CNDRN – WHAT?



CNDRN - HOW?



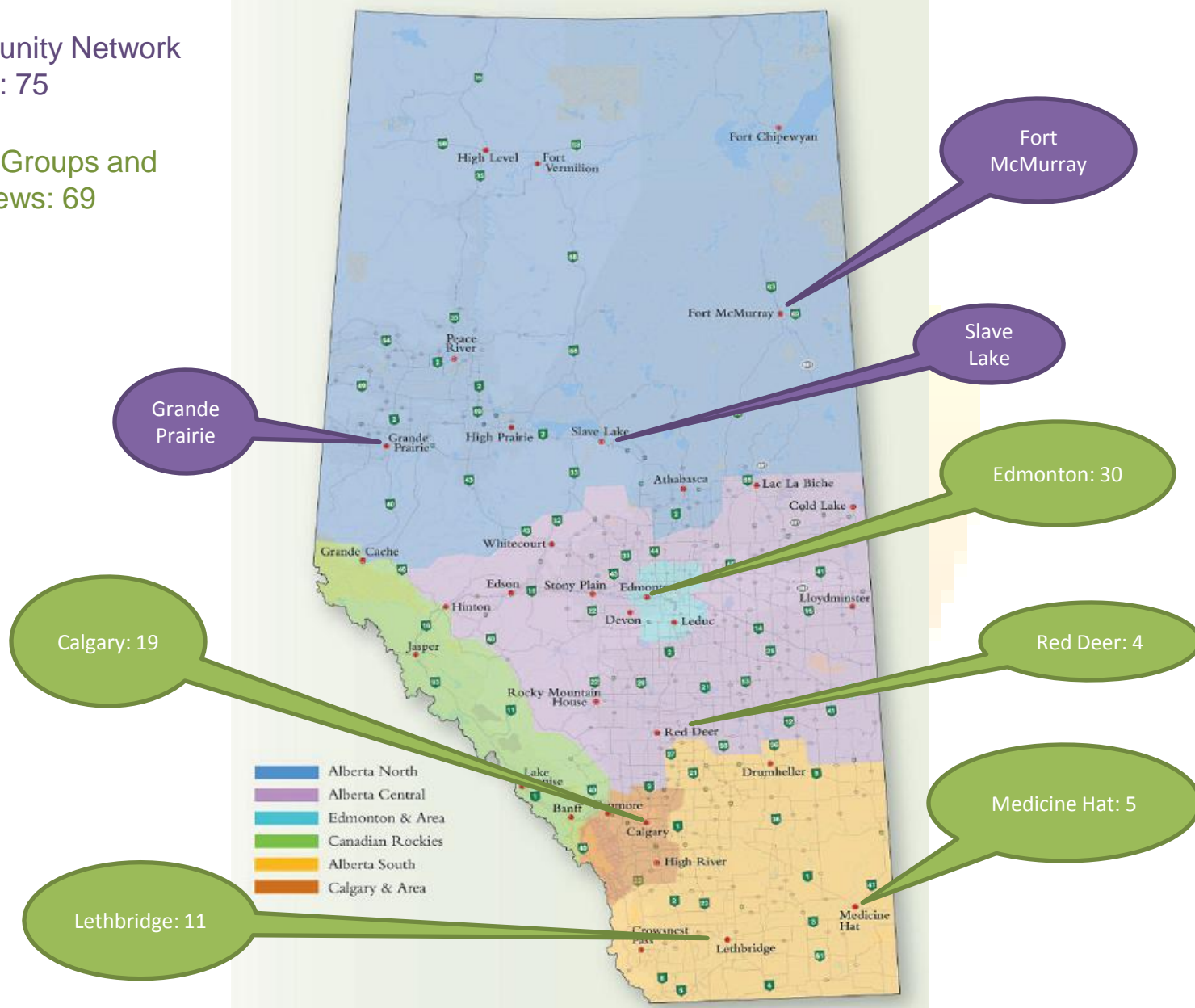
DATA COLLECTION



RESULTS: PARTICIPANTS

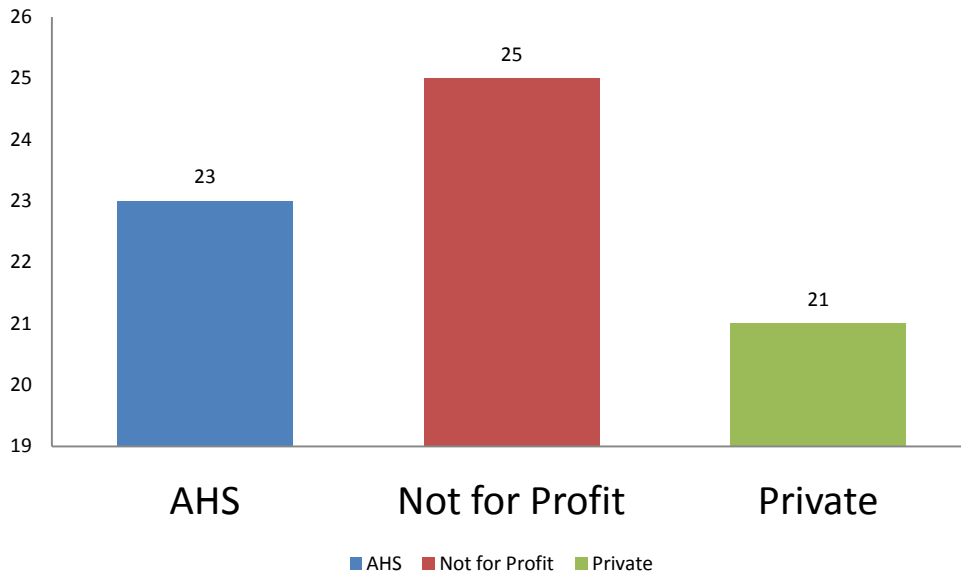
Community Network events: 75

Focus Groups and Interviews: 69



RESULTS: PARTICIPANTS

Participant Provider Organizations



Participants' Roles	
Role	#
Administrator/Manager/ Director of care	22
Professional practice leads	12
Education (Examples learning consultant)	7
HCA	7
Nursing staff (NP/RN/LPN/)	6
Non- direct care staff (housekeeping/dining room)	6
Rehabilitation Staff	4
Recreation Staff	3
Physician	2
Grand Total	69

DATA ANALYSIS



RESULTS: THEMES

Theme	Sub- Themes
Mental Health related issues	<ul style="list-style-type: none">- Challenging behaviors- Care for non- dementia clients- Client Mix
Education related issues	<ul style="list-style-type: none">- Adult Learning- Effectiveness and outcomes- HCA Training
System navigation and transition of care	<ul style="list-style-type: none">- Information and Education- Assessment- Impact on clients and families
Technology for adult learning and point of care	
Role definition within the CC sector	

RESULTS: THEMES

Working with families	<ul style="list-style-type: none">- Family's role- Families as CC clients- The overlooked value of family's knowledge
Staff retention and recruitment	<ul style="list-style-type: none">- Recruitment- Retention
Caregiving	<ul style="list-style-type: none">- Attitudes and attributes of caregivers- Caregiving and couples in the CC sector- Impact of habits and addictions
Intercultural issues	<ul style="list-style-type: none">- Clients' cultural backgrounds- Staff's cultural backgrounds
Need for Recreation and Rehabilitation staff	<ul style="list-style-type: none">- Need evidence to support funding

RESULTS: LOCATION- DEPENDENT THEMES

Theme	Province Area
Palliative Care, end of life and hospice	Edmonton
RAI Research	Calgary and Edmonton
AHS Policy Inconsistencies	Southern Alberta
First Nations issues	Northern Alberta

RESULTS: PILOT PROJECTS

- As part of the CRDN, ICCER is funding 2 research teams to work on 2 of the top issues identified.
- These projects will provide some insight and potential strategies into issues identified by front-line workers as important.

RESULTS: PILOT PROJECTS

1. Challenging/responsive behaviours

- November 2012 – Challenging behaviours symposium: over 80 people attended across Alberta (and Manitoba, Ontario).
- Funding for team led by Dr. Suzette Brémault-Phillips: development of a network to support front-line workers
(Behavioural Supports Alberta www.bsa.ualberta.ca)

RESULTS: PILOT PROJECTS

2. Adult learning - Learning Circles as an innovative means of transferring knowledge.
- Funding a project at Excel Society and Bethany Care Society to evaluate the effectiveness of learning circles as a means of KT.

LESSONS LEARNED

- Ethics documents
- Interdisciplinary focus groups
- Difficulty recruiting Home Care personnel
- Rural areas – communication, scheduling, transportation barriers

NEXT STEPS

- Disseminate our findings:
 - www.iccer.ca
 - twitter (@ICCER_AB)
 - facebook (<http://tinyurl.com/oq7cz36>), and
 - LinkedIn (<http://tinyurl.com/p9eabah—Group>) or (<http://tinyurl.com/oo6kjmd—Company page>)
- Encouraging researchers to do research into these high priority issues

A PROVIDER PERSPECTIVE

- Why Excel Society joined ICCER
- What benefits ICCER participation has brought

ICCER

Sandra Woodhead Lyons

Executive Director

(780) 248-1504

sandra@iccer.ca

www.iccer.ca