

Embedding a palliative approach to care in continuing care: The ICCER team

Emily Dymchuk, Institute for Continuing Care Education & Research (ICCER)

Embedding a Palliative Approach to Care (EPAC)

- Originally developed by Vancouver Coastal Health
- Funding provided by CFHI

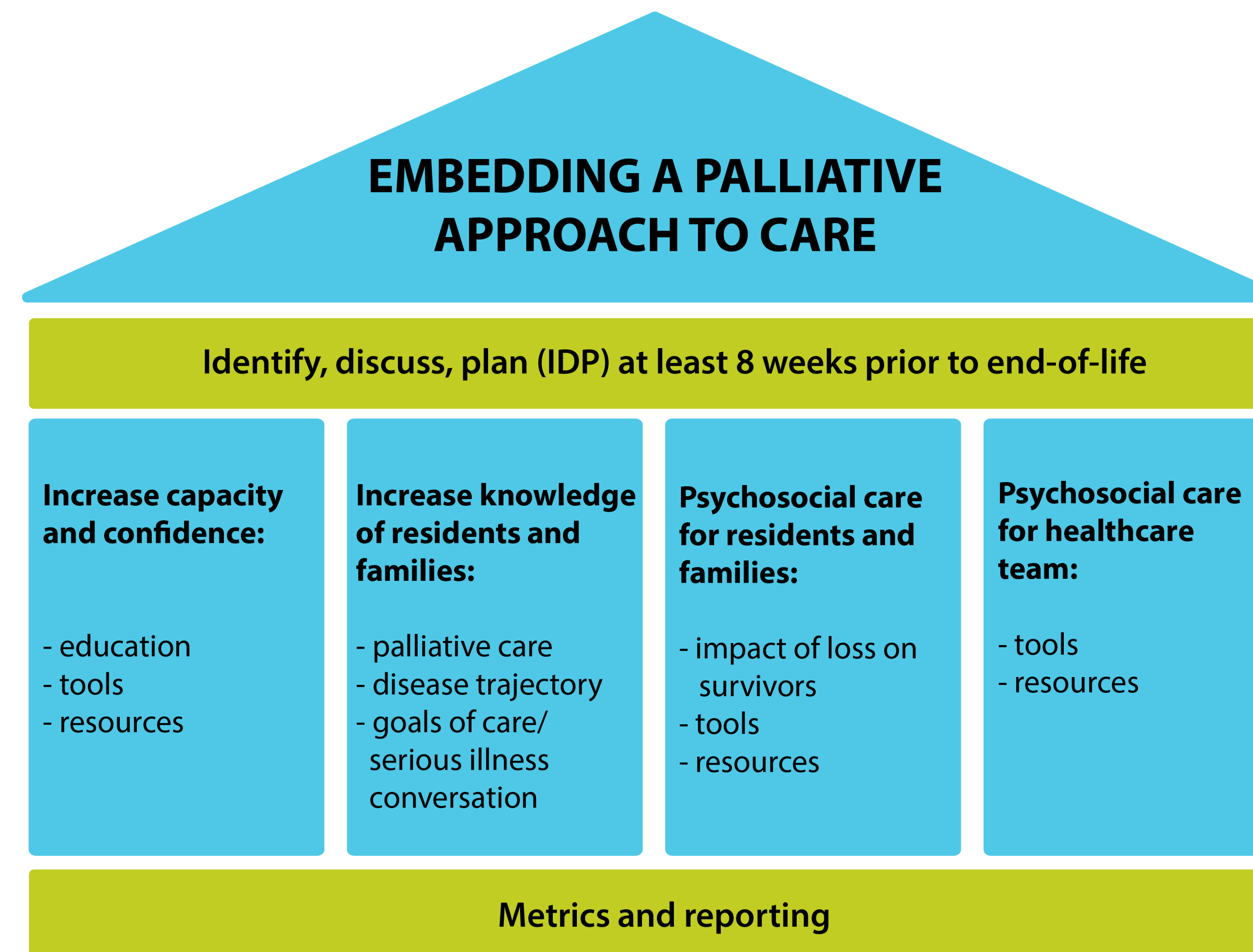
ICCER Team

- 1 of 7 teams chosen across Canada
- 4 continuing care provider organizations
 - Bethany Airdrie
 - Lifestyle Options
 - St. Michael's LTCC
 - Wing Kei
- 9 supportive living & long-term care sites

Psychosocial Support

- Comfort carts
- Palliative care room
- Pastoral care
- Honour guard
- Memorial spaces
- Signs/symbols
- All Saints Day
- Tree of memories

Objectives



Outcomes

EPAC Measures	Org 1 (SL)	Org 2 (LTC)	Org 3 (LTC)	Org 4 (SL & LTC)	All sites
# Reported Deaths	21	21	37	30	109
Average LOS (in years)	5.1	2.7	4.8	4.6	4.4
% Deaths with GOC	57% (12)	100% (21)	100% (37)	97% (30)	92% (100)
% Deaths with GOC < 2 weeks	0% (0)	29% (6)	32% (12)	37% (11)	29
% Deaths in the home	19% (4)	86% (18)	95% (35)	70% (21)	72% (78)

Care Team Experience

- Identified site champions
- Education & training
 - Palliative approach to care
 - Implementation strategies
- Resources & Tools
 - Online learning platform
 - Webinars
 - Coaching Calls

Resident & Family Experience

- Introduced EPAC
- Early care conversations
 - Starting at admission
 - Residents comfortable talking to staff
 - Families want to be prepared
 - Cultural considerations

Next Steps

- More education
 - Practicing difficult conversations
 - Need for refreshers
- Introduce formal supports for all stakeholders
- Sustainability
 - Data tracking



For more information, contact emily@iccer.ca.

Canadian Foundation for **Healthcare Improvement**

Fondation canadienne pour **l'amélioration des services de santé**